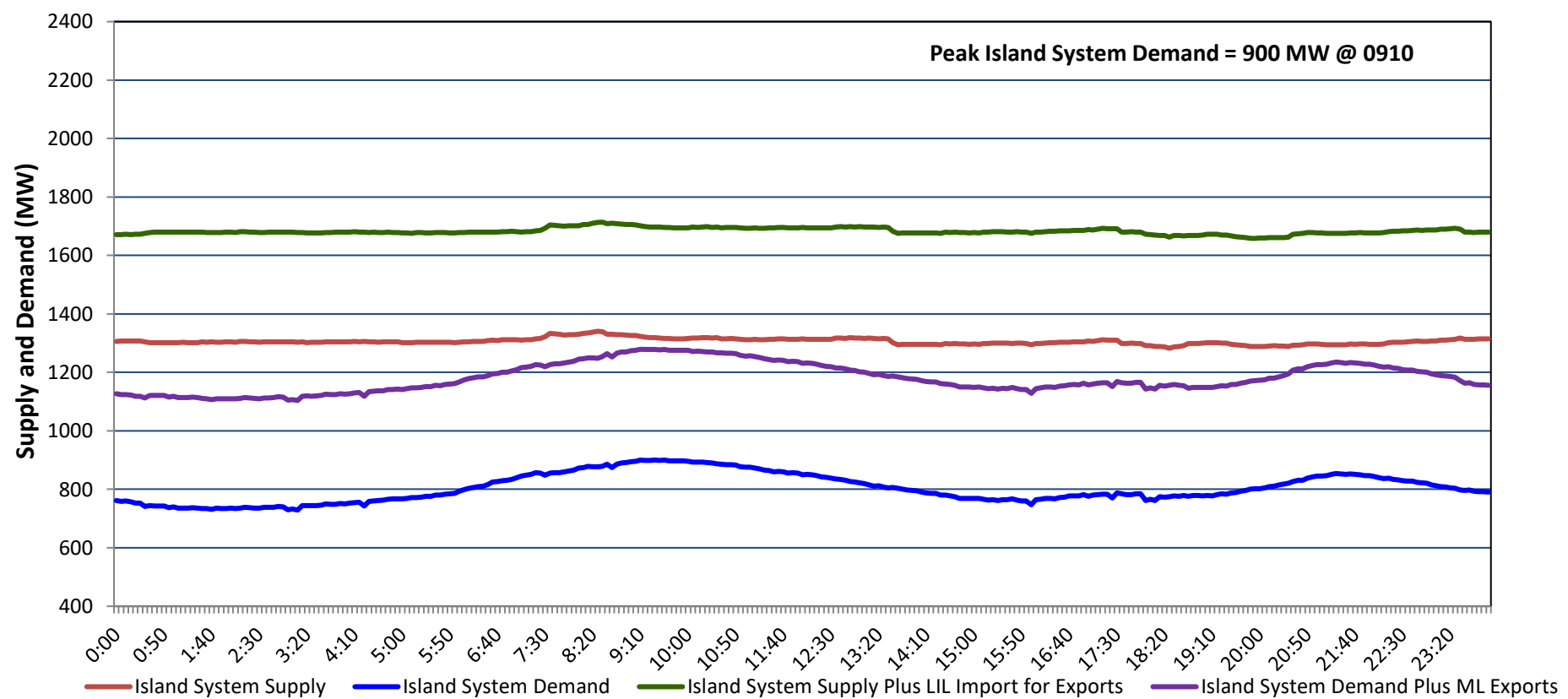


# Newfoundland Labrador Hydro (NLH) Supply and Demand Status Report Filed Tuesday, May 21, 2024

## Section 1 Island Interconnected System - Supply, Demand & Exports Actual 24 Hour System Performance For Saturday, May 18, 2024



### Island Supply Notes For May 18, 2024

- A As of 2059 hours, July 13, 2023, Stephenville Gas Turbine unavailable due to forced outage (50 MW).
- B As of 1400 hours, February 06, 2024, St. Anthony Diesel Plant available at 8.7 MW due to forced derating (9.7 MW).
- C As of 1011 hours, April 12, 2024, Holyrood Unit 1 unavailable due to planned outage (170 MW).
- D As of 2306 hours, May 06, 2024, Labrador Island Link available at 450 MW due to forced derating (700 MW) - Bipole.
- E As of 0807 hours, May 13, 2024, Hardwoods Gas Turbine unavailable due to planned outage (50 MW).
- F As of 1656 hours, May 13, 2024, Holyrood Unit 3 available but not operating (150 MW).
- G As of 1346 hours, May 17, 2024, Holyrood Unit 2 available at 85 MW but not operating (170 MW).
- H At 0000 hours, May 18, 2024, Bay d'Espoir Unit 5 unavailable due to forced extension to planned outage (76.5 MW).
- I At 0000 hours, May 18, 2024, Bay d'Espoir Unit 6 unavailable due to forced extension to planned outage (76.5 MW).

## Section 2 Island Interconnected System - Supply, Demand & Outlook

Sun, May 19, 2024	Island System Outlook <sup>2</sup>	Seven-Day Forecast	Island System Daily Peak Demand (MW)	
			Forecast <sup>8</sup>	Adjusted <sup>6</sup>
Island System Supply: <sup>4</sup>	<b>1,352 MW</b>	Sunday, May 19, 2024	<b>970</b>	<b>920</b>
NLH Island Generation: <sup>3,7</sup>	950 MW	Monday, May 20, 2024	930	880
NLH Island Power Purchases: <sup>5</sup>	115 MW	Tuesday, May 21, 2024	900	850
NP and CBPP Owned Generation:	215 MW	Wednesday, May 22, 2024	885	835
LIL Net Imports to Island: <sup>9</sup>	72 MW	Thursday, May 23, 2024	980	930
		Friday, May 24, 2024	990	940
7-Day Island Peak Demand Forecast:	<b>990 MW</b>	Saturday, May 25, 2024	950	900

### Island Supply Notes For May 19, 2024

- Notes:
1. Generation outages for running and corrective maintenance are included. These are not unusual for power system operations. They generally do not impact customer supply. Hydro schedules outages to system equipment whenever possible to coincide with periods when customer demands are low and sufficient supply reserves are available. However, from time to time equipment outages are necessary and reserves may be impacted.
  2. As of 0800 Hours.
  3. Gross continuous unit output.
  4. Gross output from all Island sources (including Note 4).
  5. NLH Island Power Purchases include: ML Imports, Exploits Generation, Rattle Brook, Star Lake, Wind Generation and capacity assistance (when applicable).
  6. Adjusted for interruptible load and the impact of voltage reduction when applicable.
  7. Due to limitations inherent in the design of combustion turbines, the output of combustion turbines may be reduced in the event that ambient temperatures exceed the threshold required for full rated output. This threshold is dependent on the design of each turbine.
  8. Does not include ML Exports.
  9. LIL Import sunk in the Island System. Actual LIL flows will be restricted by various system conditions including, but not limited to, Island Load, ML Exports and Avalon Unit status.

## Section 3 Island Peak Demand and Exports Information Previous Day Actual Peak and Current Day Forecast Peak

Sat, May 18, 2024	Island Peak Demand <sup>10</sup>	9:10	900 MW
	Exports at Peak		379 MW
	LIL Net Imports to Island		944 MWh
Sun, May 19, 2024	Forecast Island Peak Demand		970 MW

- Notes: 10. Island Demand is supplied by NLH generation and purchases, LIL Imports plus generation owned and operated by Newfoundland Power and Corner Brook Pulp & Paper (Deer Lake Power, DLP).